

RIVKLE® M2007 Kit

RIVKLE® kit including RIVKLE® M2007 manual setting tool

Delivery scope:

- 1 RIVKLE® M2007 hand-held setting tool
- 3 threaded mandrels and 3 anvils (M6, M8, M10)
- 50 blind rivet nuts M6, flat head, steel
- 25 blind rivet nuts M8, flat head, steel
- 25 blind rivet nuts M10, flat head, steel
- Practical case for storage and transport
- Operating instructions

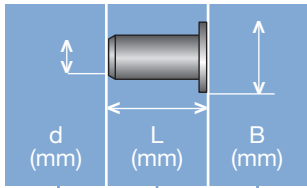
Function:

Screwing and unscrewing of the RIVKLE® blind rivet nut using a knurled nut. Setting is performed through the lever ratchet function.

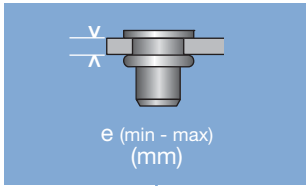
Technical information can be found on the last page.



Diameter (d)	Article number	Weight g
M6 - M10	23530201001	1200

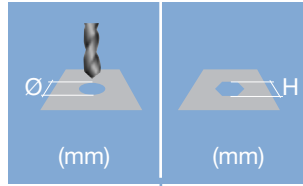


Head diameter
Overall length
Thread size



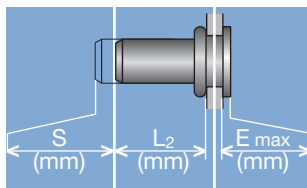
Grip range

Defines the range of total thickness of the customers part (even if it consists of more than one layer)



Hole geometry

If round → diameter
 If hexagonal → width across flats



Head projection after setting

Variable according to the application (setting load, material substrate, etc.)

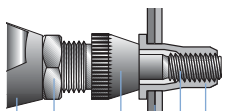
Blind side projection after installation

Defines the clearance needed on the blind side (cannot be used for quality control)

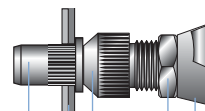
Setting stroke

Difference of total length before and after installation

RIVKLE® Nut



RIVKLE® Stud



- RIVKLE®
- Mandrel*
- Customers part
- Anvil*
- Counter nut
- Setting tool

in accordance to chosen RIVKLE®

All technical data refer to the measure mm

