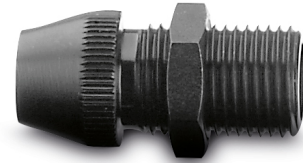


RIVKLE® Nose piece

Spare anvil for pneumatic/hydraulic setting tools to process RIVKLE® PN blind rivet nuts.

The length can be adjusted according to the RIVKLE® thread length.
Manual adjustment, secured with a locknut.

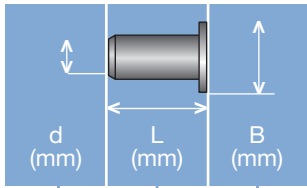
Technical information can be found on the last page.



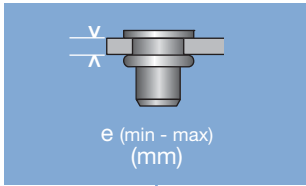
Diameter (d)	Article number	For tool type
M 4	23691304086	P2007PN
M 5	23691305095	P2007PN
M 6	23691306128	P2007PN
M 8	23691308087	P2007PN, P3007PN
M 10	23691310010	P2007PN, P3007PN

All technical data refer to the measure mm

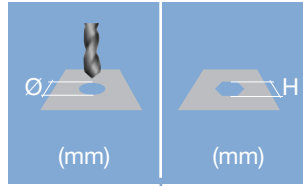




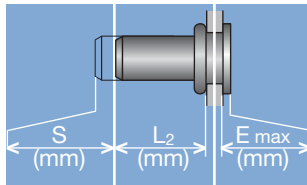
Head diameter
Overall length
Thread size



Grip range
 Defines the range of total thickness of the customers part (even if it consists of more than one layer)



Hole geometry
 If round → diameter
 If hexagonal → width across flats

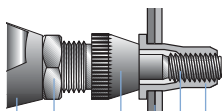


Head projection after setting
 Variable according to the application (setting load, material substrate, etc.)

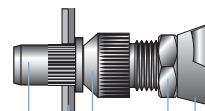
Blind side projection after installation
 Defines the clearance needed on the blind side (cannot be used for quality control)

Setting stroke
 Difference of total length before and after installation

RIVKLE® Nut



RIVKLE® Stud



- RIVKLE®
- Mandrel*
- Customers part
- Anvil*
- Counter nut
- Setting tool

in accordance to chosen RIVKLE®

All technical data refer to the measure mm

