

## RIVKLE<sup>®</sup> Nose piece

Spare anvil for the RIVKLE<sup>®</sup> ES 51 hydraulic manual setting tool.

Technical information can be found on the last page.



Diameter (d)	Article number	For tool type
M 6	23510806030	ES 51
M 8	23510808030	ES 51
M 10	23510810030	ES 51
M 12	23510812030	ES 51
M 14	23510814030	ES 51

All technical data refer to the measure mm





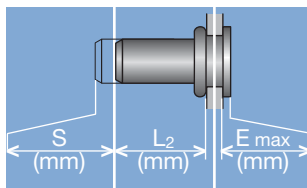
Head diameter  
Overall length  
Thread size



**Grip range**  
Defines the range of total thickness of the customers part (even if it consists of more than one layer)



**Hole geometry**  
If round → diameter  
If hexagonal → width across flats

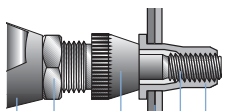


**Head projection after setting**  
Variable according to the application (setting load, material substrate, etc.)

**Blind side projection after installation**  
Defines the clearance needed on the blind side (cannot be used for quality control)

**Setting stroke**  
Difference of total length before and after installation

**RIVKLE® Nut**



**RIVKLE® Stud**



- RIVKLE®
- Mandrel\*
- Customers part
- Anvil\*
- Counter nut
- Setting tool

\*in accordance to chosen RIVKLE®\*

All technical data refer to the measure mm

